



AUCTION

ONSITE & ONLINE

Saturday ▶ August 17th ▶ 10:00am

3 B/R BRICK HOME WITH 26.24 AC. IN 9 TRACTS



3471 H.E. JOHNSON RD

PROPERTY TRACTS ON BOTH H.E. JOHNSON RD AND OLD MT PLEASANT SCHOOL RD



**TRACT 1 8.48 AC • TRACT 2 1.03 AC • TRACT 3 1.02 AC
TRACT 4 1.00 AC • TRACT 5 1.14 AC • TRACT 6 HOUSE & 1.00 AC
TRACT 7 1.00 AC • TRACT 8 4.84 AC W/BARN • TRACT 9 6.73 AC W/POND**

Make your plans to join Progressive Auction Group **Saturday, August 17th at 10:00am** for this **Absolute Auction** located at **3471 H.E. Johnson Rd, Alvaton, KY 42122.**

House Includes:

- 3 Bedroom 1.5 Bath Brick Home with Attached Garage
- Covered Front Porch & Rear Covered Deck
- Living Room & Family room w/Fireplace
- Central HVAC
- Barn & Pond
- Paved Driveway
- Storage building

For more info call **Steve Henry (270-392-5325)** or **Steve Cherry (270-392-5258).**



Steve Henry
270-392-5325
PRINCIPAL AUCTIONEER



Steve Cherry
270-392-5258
PRINCIPAL AUCTIONEER



  
PROGRESSIVE AUCTION GROUP
AUCTION CONCEPTS USA
2435 Fitzgerald Industrial Drive • Bowling Green, KY

▶ For further auction information visit: www.ProgressiveAuctionGroup.com

Experience The Difference Of An Auction Group | CERTIFIED ESTATE SPECIALISTS • FARM/LAND • PERSONAL PROPERTY • BENEFIT SPECIALISTS



STEVE CHERRY
PRI, CAI, CES
Auctioneer
270-392-5258



STEVE HENRY
PRI, CPPA, CES
Auctioneer
270-392-5325



ANDREW GOTT
Apprentice Auctioneer
270-535-0777



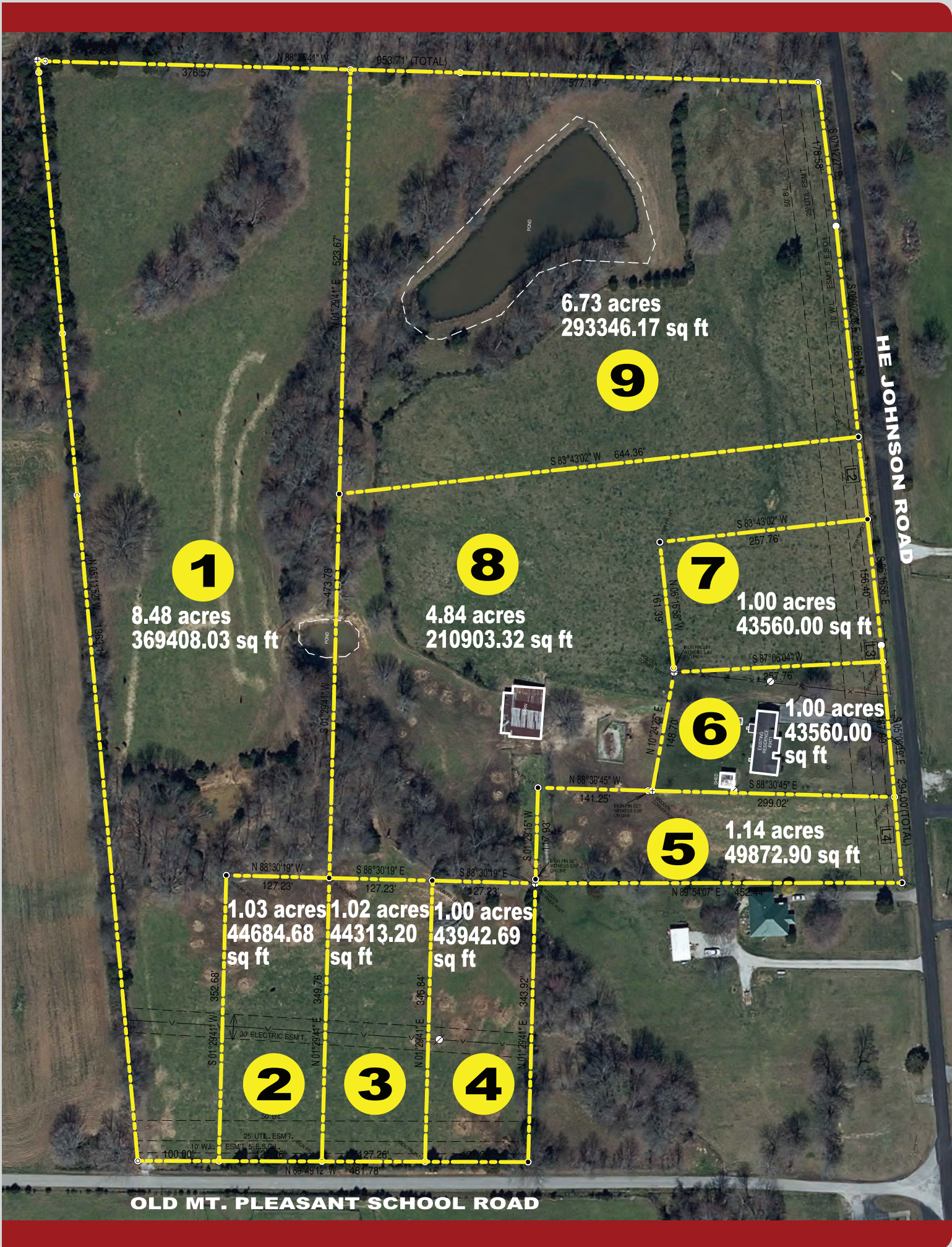
DALE MANLEY
Auctioneer
270-599-2044



DAVID WILBERT
Professional Ringman
270-779-8587



NATHAN CHERRY
PRI
Auctioneer
270-202-8195



1
8.48 acres
369408.03 sq ft

8
4.84 acres
210903.32 sq ft

7
1.00 acres
43560.00 sq ft

6
1.00 acres
43560.00 sq ft

5
1.14 acres
49872.90 sq ft

2
1.03 acres
44684.68 sq ft

3
1.02 acres
44313.20 sq ft

4
1.00 acres
43942.69 sq ft

9
6.73 acres
293346.17 sq ft

HE JOHNSON ROAD

OLD MT. PLEASANT SCHOOL ROAD