

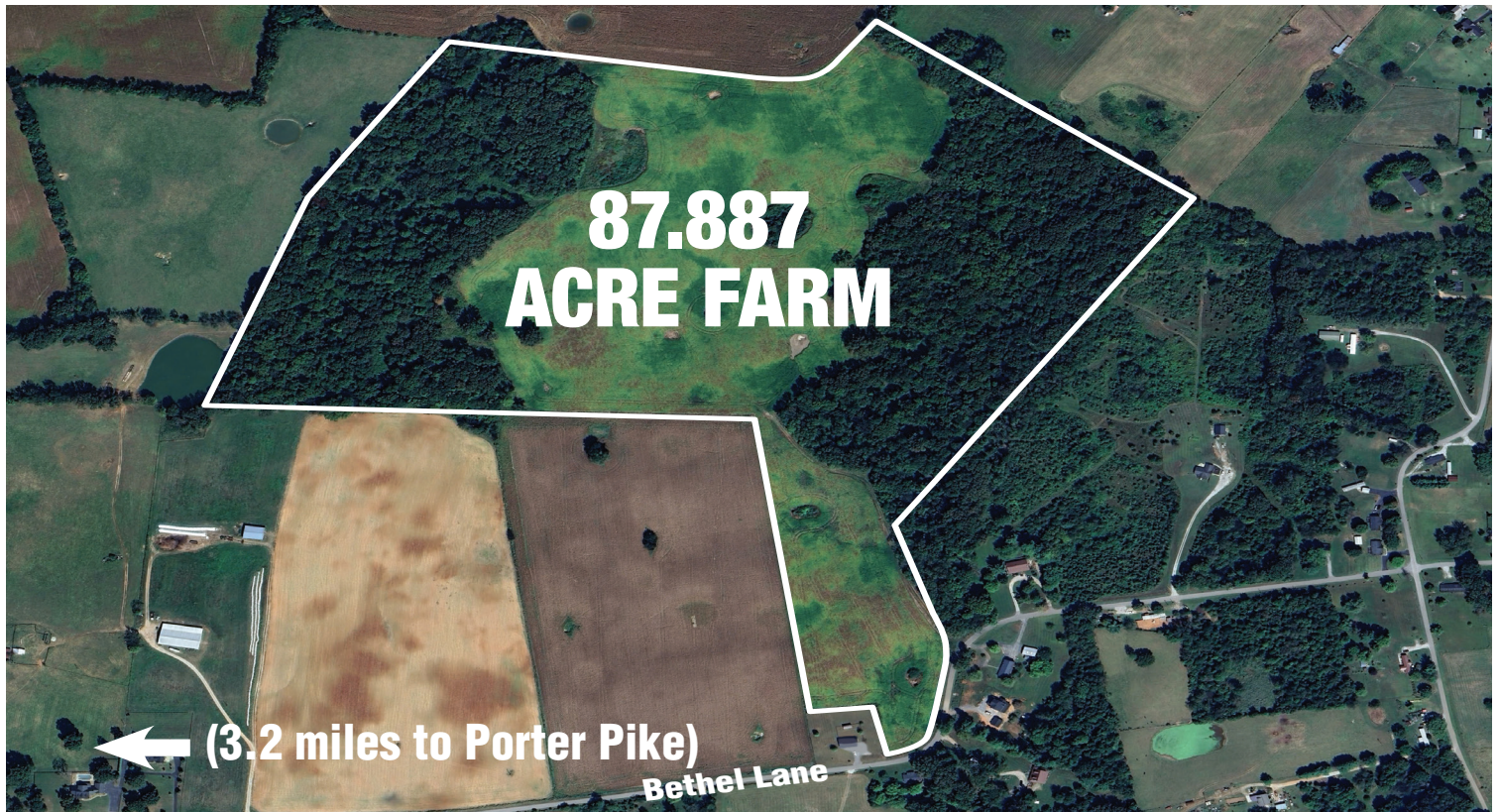


# AUCTION

**BETHEL  
LANE  
BOWLING GREEN, KY**

**Saturday ▶ January 18th ▶ 2:00pm CST**

**ABSOLUTE AUCTION ONSITE AND ONLINE**



Make your plans to join Progressive Auction Group **Saturday, January 18th at 2:00pm (CST)** for this **Onsite and Online Auction**. The property location is at **Bethel Lane; Bowling Green KY 42101**.

**This Property Includes:**

- Bethel Lane 87.887 Acre Farm
- Marked survey • Mostly Tillable

For more info call **Steve Henry (270-392-5325)** or **Steve Cherry (270-392-5258)**.



**Dale Manley**  
270-599-2044  
PRINCIPAL AUCTIONEER



**Steve Cherry**  
270-392-5258  
PRINCIPAL AUCTIONEER



**PROGRESSIVE AUCTION GROUP**  
AUCTION CONCEPTS USA  
2435 Fitzgerald Industrial Drive • Bowling Green, KY



▶ For further auction information visit: [www.ProgressiveAuctionGroup.com](http://www.ProgressiveAuctionGroup.com)

**Experience The Difference Of An Auction Group | CERTIFIED ESTATE SPECIALISTS • FARM/LAND • PERSONAL PROPERTY • BENEFIT SPECIALISTS**



**STEVE CHERRY**  
PRI, CAI, CES  
Auctioneer  
270-392-5258



**STEVE HENRY**  
PRI, CPPA, CES  
Auctioneer  
270-392-5325



**ANDREW GOTT**  
Apprentice Auctioneer  
270-535-0777



**DALE MANLEY**  
Auctioneer  
270-599-2044



**DAVID WILBERT**  
Professional Ringman  
270-779-8587